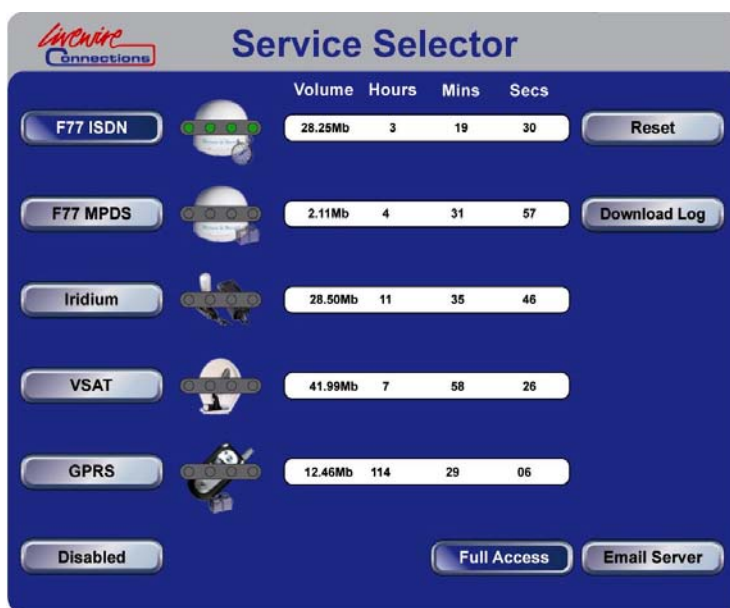


Alan Spicer Marine Telecom
a_spicer@bellsouth.net
Mobile Tel: +1 954 683 3426
Messages Tel: +1 954 977 5245



Take Control of Your Communications!

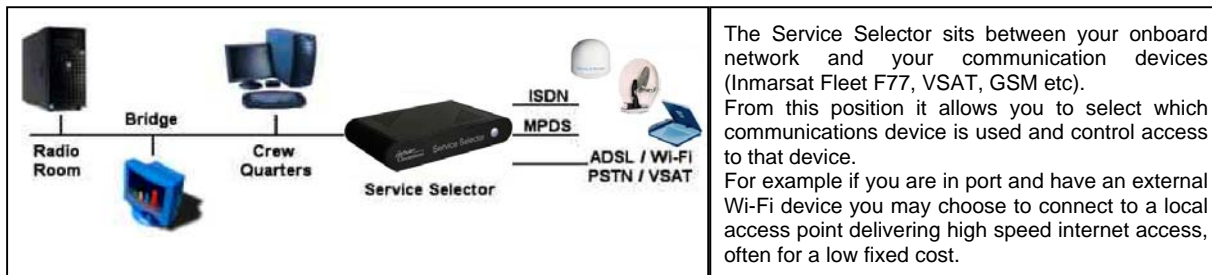
Service Selector



Today yacht and merchant marine markets are facing an increased requirement for data connectivity be it for email, internet access, file sharing, remote system monitoring or simply corporate connectivity. Access to this data can be through a number of standard communications systems all providing particular benefits and cost savings depending on location.

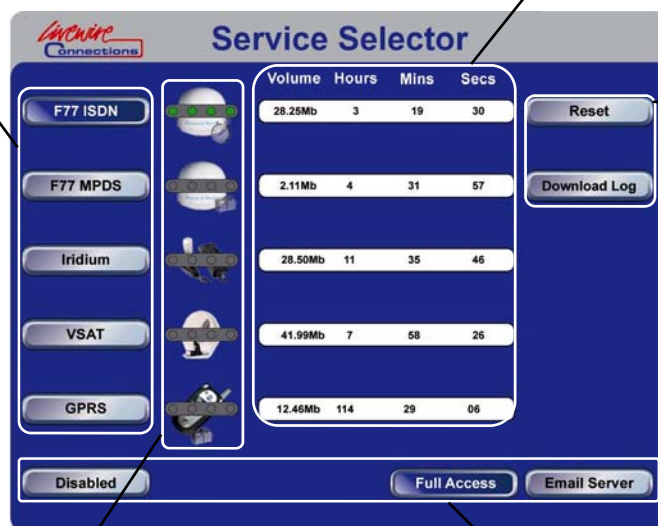
The Service Selector allows you to seamlessly select which communications device you wish to use for your data connection and gives you visibility of the call connection state, call duration/volume and access level at all times. It's design makes it ideal for installation on new builds or retrofit to vessels with a local area network (LAN) and multiple communications devices including terrestrial shore side connections when available.

How Does It Work?



The Service Selector can be configured to control up to five different communications devices including Inmarsat Fleet F77 ISDN & MPDS, VSAT, Iridium, Thuraya DSL, Wi-Fi and terrestrial services via the in-built ISDN TA, LAN and serial data ports.

The data counters show the amount of data sent and received in bytes and time for each service.



Reset the traffic counters and download your call log for the last 60 days.

The connection status can be monitored at all times with Yellow, Green & Red LED's indicating connection status for each service.



You can control the network access level at any time by selecting:

"Full Access" to allow any user on the network to use a service.

"Email Server" to only allow a single PC, typically the email server, access to a service enabling scheduled use of optimised email clients like Rydex and AMOS.

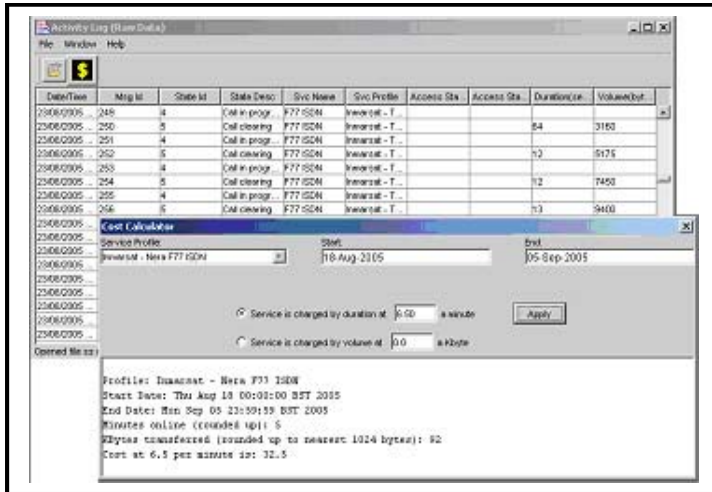
"Disabled" prevents network data access to all ser-

Service Selector



Keep An Eye On Your Traffic At All times!

The Service Selector has an inbuilt call log facility allowing you to monitor all your data traffic and Access Level changes against time and date stamps. The Call Log can be downloaded at any time for review using Activity Log Utility Tool allowing you to view all connections and call data with Access Level Changes. By entering your own call cost parameters you can compare the approximate spend onboard with actual airtime bills as and when they arrive on shore.



The Activity Log Utility showing Call Log and Usage Costs

Is It Easy To Install?

Absolutely, using an ergonomic and robust black box design, the Service Selector can be mounted on a bulkhead or fitted within a rack. It is built to be configured for a quick, seamless integration by your installer and will fit into any new or existing network. Supplied with two bulkhead mounting brackets the Service Selector can be mounted virtually anywhere onboard. However it is recommended that serial cable connections for MPDS and GSM are not longer than 3 metres in length.



A Service Selector shown suspended with Nera Fleet F77

Service Selector Rear Interface Panel

The Service Selector interface panel provides connectivity for:



- Inmarsat Fleet ISDN
- Inmarsat Fleet MPDS
- VSAT
- DVB
- Iridium
- Thuraya DSL
- ADSL
- PSTN
- Wi-Fi

Service Selector



Get The Most From Your Investment By Fitting A Service Selector!

Most vessels have three or more communications systems onboard, ranging from Inmarsat to VSAT. In the past in order for an owner to benefit from this investment it required complicated IT integration, well not anymore! Fit a Service Selector today and get the most from your investment by being able to simply select the best communications device for the job.



INMARSAT



IRIDIUM



VSAT & DVB



GSM



GPRS



THURAYA DSL



WI-FI

Technical Specifications	
Interfaces	1x Euro-ISDN 3x Ethernet 2x Serial
Dimension	Height: 50mm Width: 275mm Depth: 172mm
Weight	2.0 ± 0.5kg
Supply Voltage	AC 100 ~ 240V (50/60Hz) DC 12V
Power Supply	60W
Approvals	FCC Part 15, Subpart B, Class B ICES-003, CSA C108.8 Class B EN55022: 1998 Class B EN61000-3-3: 1995 + A1: 2001 EN55024: 1998 + A1: 2001 89/336/EEC, Amended by 92/31/EEC, 93/68/EEC, and 98/13/EEC

For further information contact:

Livewire Connections Ltd
 Units 11, First Quarter
 Blenheim Road
 Epsom KT19 9QN
 Surrey
 ENGLAND
 Tel: +44 (0)1372 734900
 Fax: +44 (0)1372 734915
 Email: info@livewire-connections.com
 Web: www.livewire-connections.com

Local Dealer Stamp
 Alan Spicer Marine Telecom
a_spicer@bellsouth.net
 Mobile Tel: +1 954 683 3426
 Messages Tel: +1 954 977 5245

Yacht Communications, Satellite, Cellular, WiFi;
 Onboard Networks, Navigation Software and Networking;
 General Computer and Communications Consulting and
 Services

The design and infrastructure concepts of Service Selector are the intellectual property and design of Livewire Digital Ltd. Any other corporate names or trademarks used within this document are the property of their respective owners. Unless specifically credited to others, the material within this document (content, layout and graphical elements) is copyright © 2000-2005 Livewire Connections Ltd - All Rights Reserved. E&O Apply.